

Dobrego Pasterza

—52—

I/M57 - 2 PIĘTRO

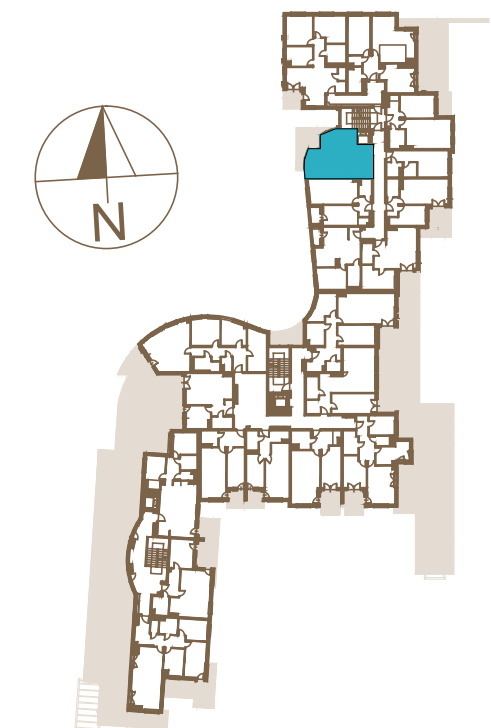
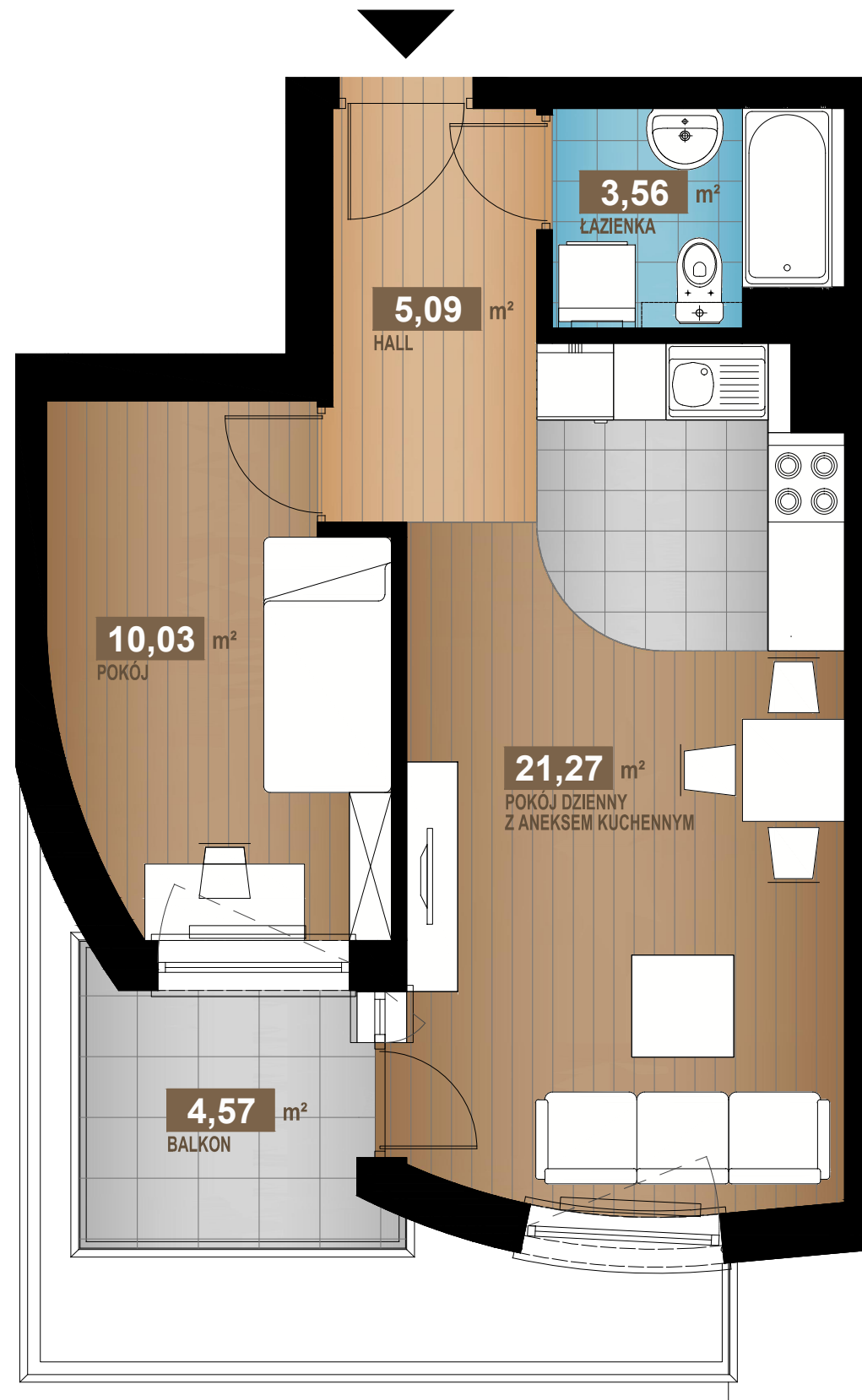
39,95 m²

2 pok.

| | |
|--------------------------------------|---------------------|
| HALL | 5,09m ² |
| POKÓJ DZIENNY Z ANEKSEM KUCHENNYM | 21,27m ² |
| POKÓJ | 10,03m ² |
| ŁAZIENKA | 3,56m ² |

SUMA 39,95m²

BALKON 4,57m²



www.dobregopasterza52.pl

S & W VISION
BOGDAN SKOCZEK