

Dobrego Pasterza

—52—

I/M53 - 2 PIĘTRO

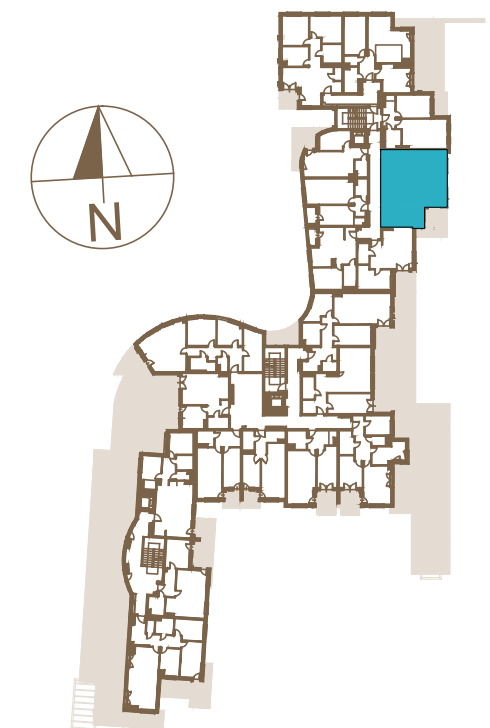
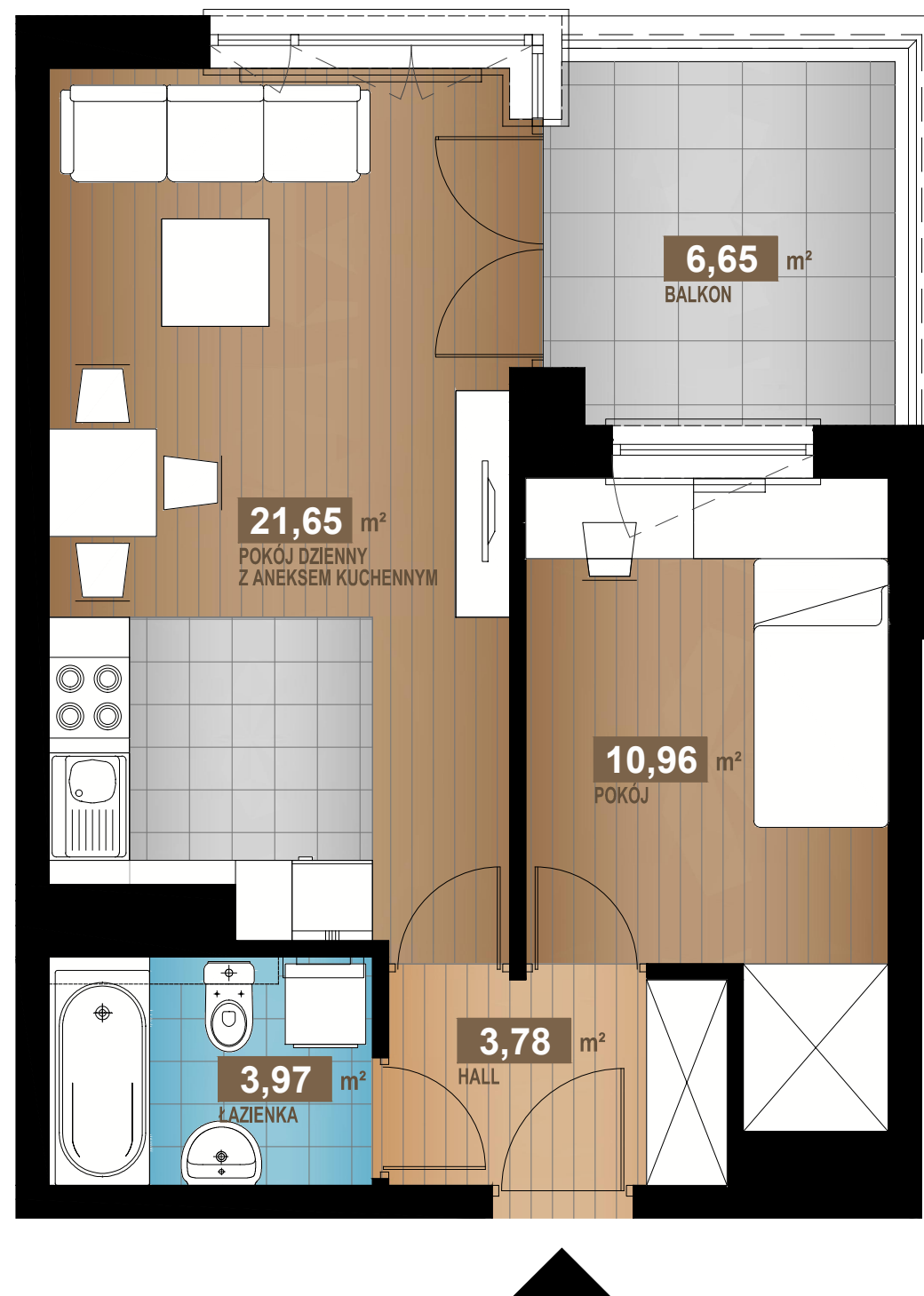
40,36 m²

2 pok.

HALL	3,78m ²
POKÓJ DZIENNY Z ANEKSEM KUCHENNYM	21,65m ²
POKÓJ	10,96m ²
ŁAZIENKA	3,97m ²

SUMA 40,36m²

BALKON 6,65m²



www.dobregopasterza52.pl

S & W VISION
BOGDAN SKOCZEK