

# Dobrego Pasterza

—52—

I/M51 - 2 PIĘTRO

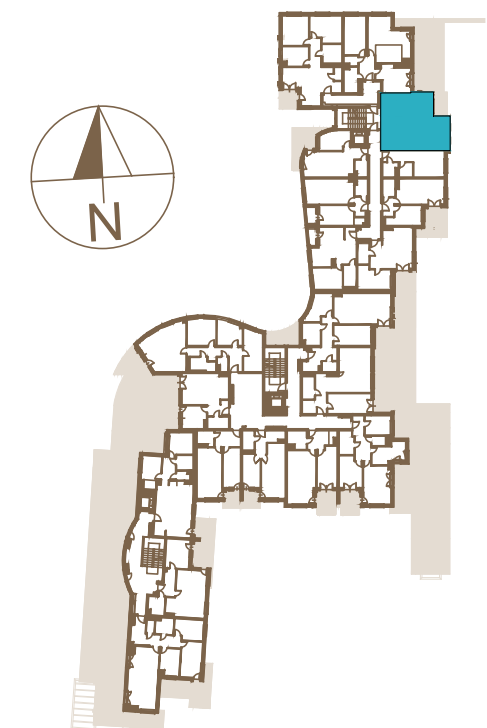
50,91 m<sup>2</sup>

2 pok.

HALL	6,88m <sup>2</sup>
POKÓJ DZIENNY Z ANEKSEM KUCHENNYM	24,73m <sup>2</sup>
POKÓJ	14,32m <sup>2</sup>
ŁAZIENKA	4,98m <sup>2</sup>

SUMA 50,91m<sup>2</sup>

BALKON 3,54m<sup>2</sup>



[www.dobregopasterza52.pl](http://www.dobregopasterza52.pl)

S & W VISION  
BOGDAN SKOCZEK