

Dobrego Pasterza

52

I/M50 - 2 PIĘTRO

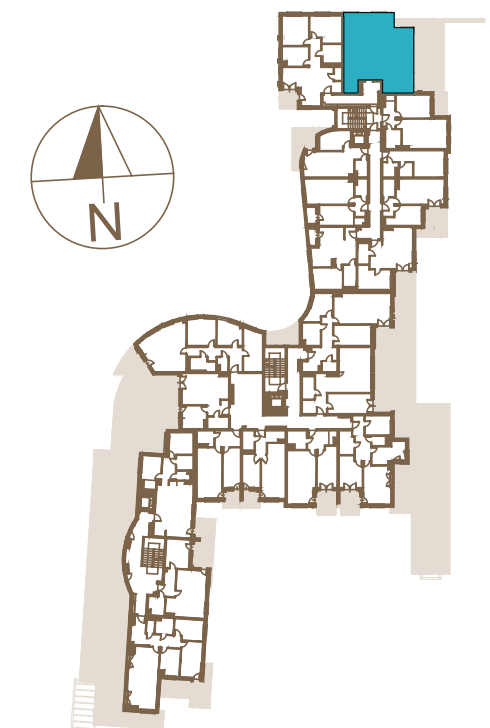
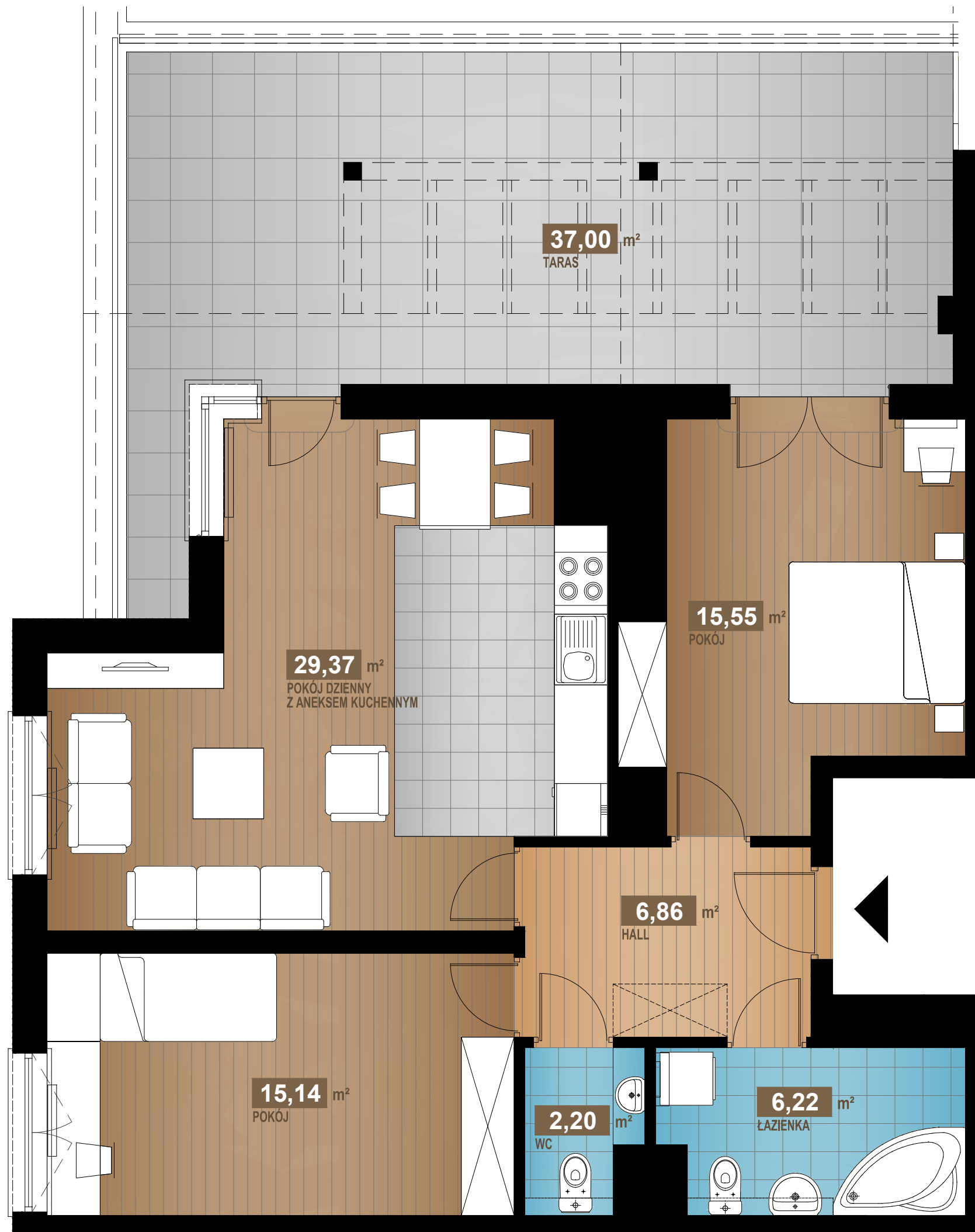
75,34 m²

3 pok.

HALL	6,86m ²
POKÓJ DZIENNY Z ANEKSEM KUCHENNYM	29,37m ²
POKÓJ	15,55m ²
POKÓJ	15,14m ²
ŁAZIENKA	6,22m ²
WC	2,20m ²

SUMA 75,34m²

TARAS 37,00m²



www.dobregopasterza52.pl

S & W VISION
BOGDAN SKOCZEK