

Dobrego Pasterza

—52—

II/M31 - 2 PIĘTRO

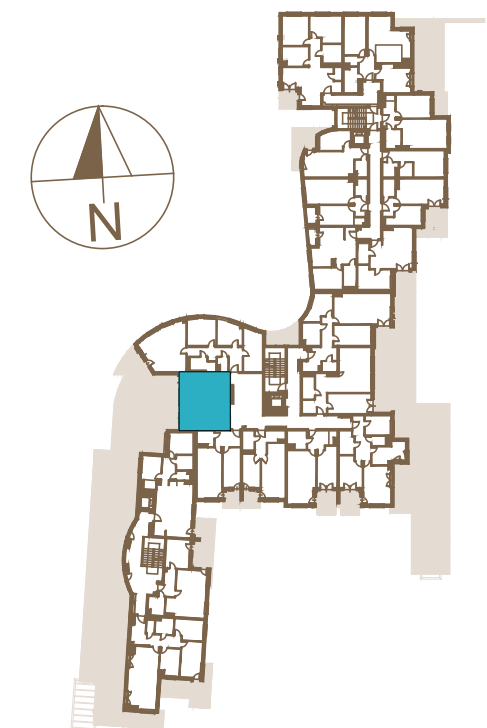
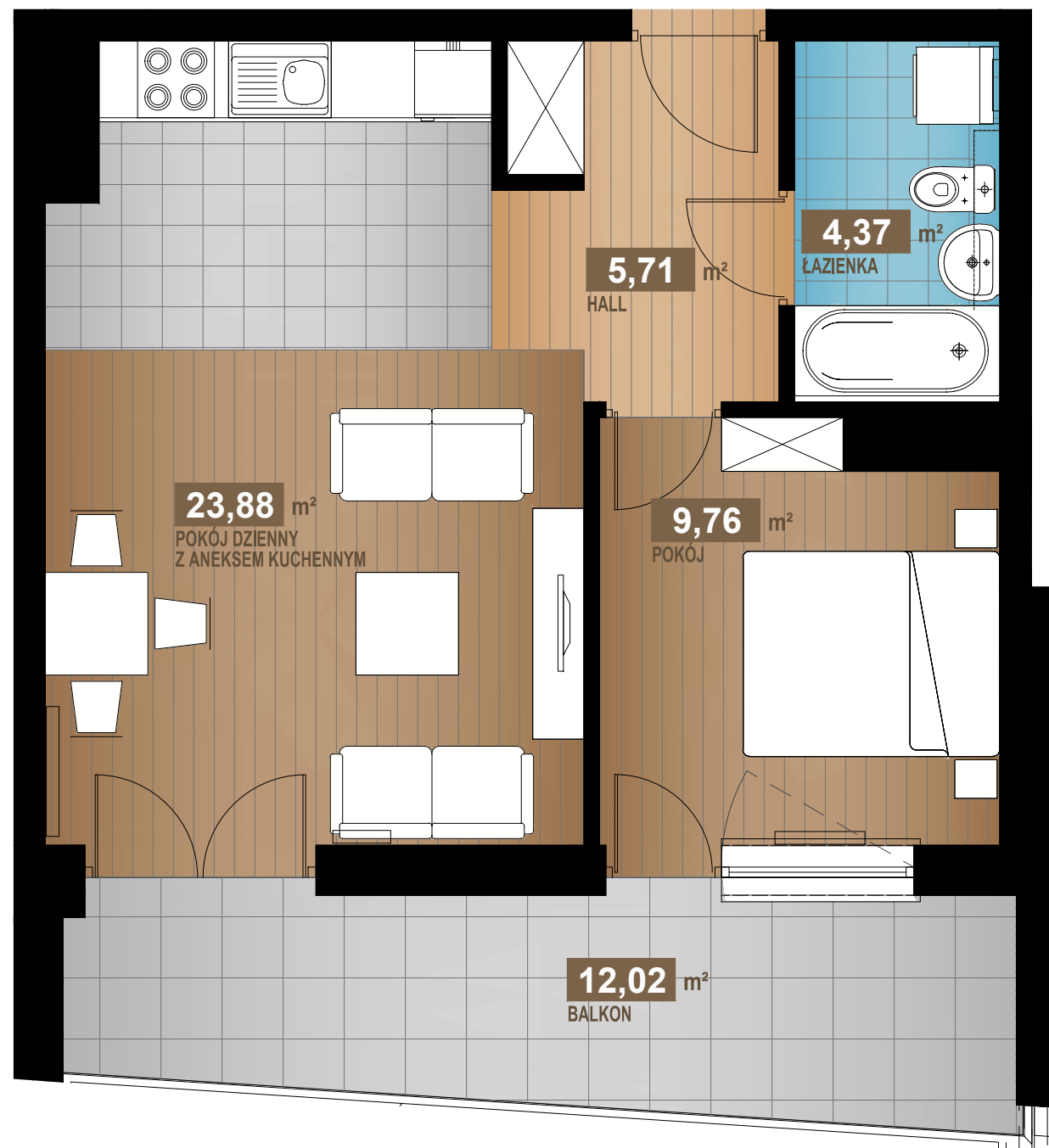
43,72 m²

2 pok.

HALL	5,71m ²
POKÓJ DZIENNY Z ANEKSEM KUCHENNYM	23,88m ²
POKÓJ	9,76m ²
ŁAZIENKA	4,37m ²

SUMA 43,72m²

BALKON 12,02m²



www.dobregopasterza52.pl

S & W VISION
BOGDAN SKOCZEK