

Dobrego Pasterza

—52—

II/M30 - 2 PIĘTRO

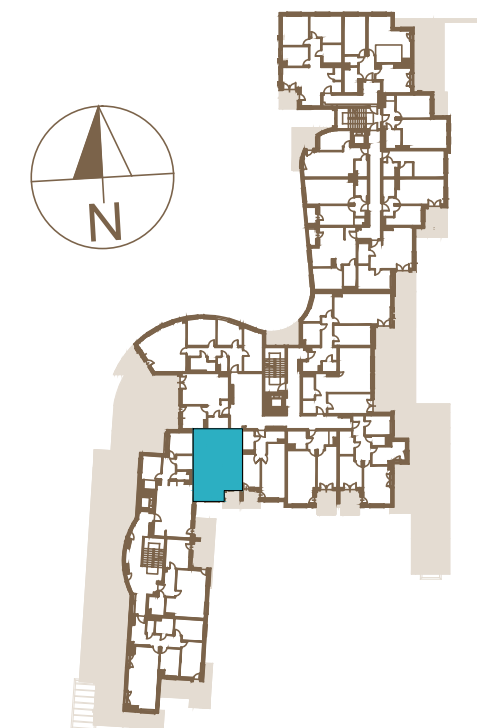
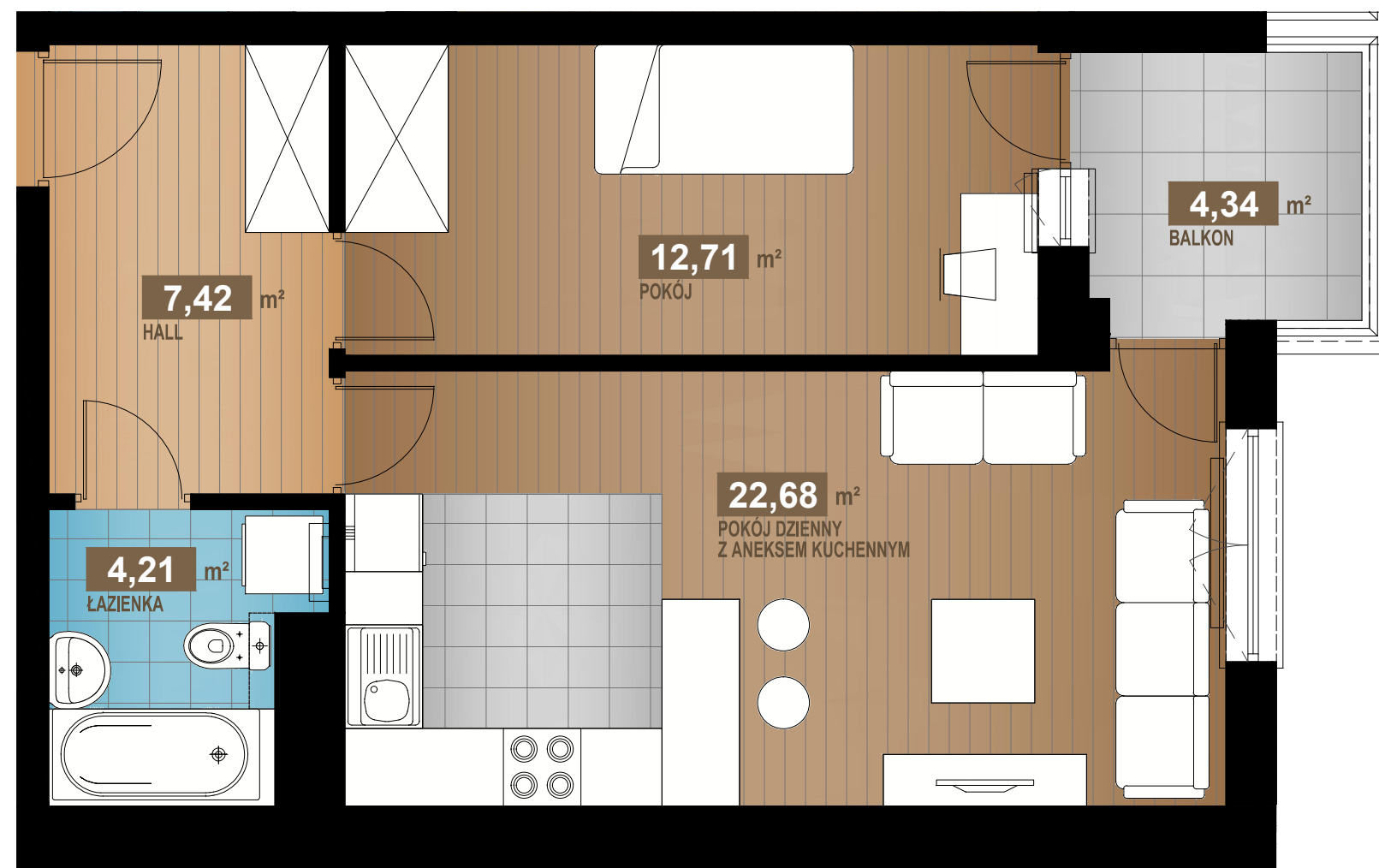
47,02 m²

2 pok.

HALL	7,42m ²
POKÓJ DZIENNY Z ANEKSEM KUCHENNYM	22,68m ²
POKÓJ	12,71m ²
ŁAZIENKA	4,21m ²

SUMA 47,02m²

BALKON 4,34m²



www.dobregopasterza52.pl

S & W VISION
BOGDAN SKOCZEK

