

# Dobrego Pasterza

—52—

III/M10 - 2 PIĘTRO

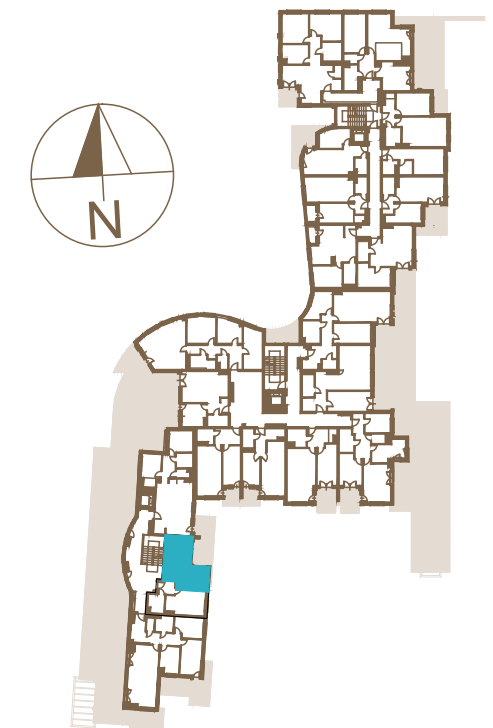
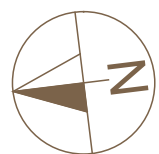
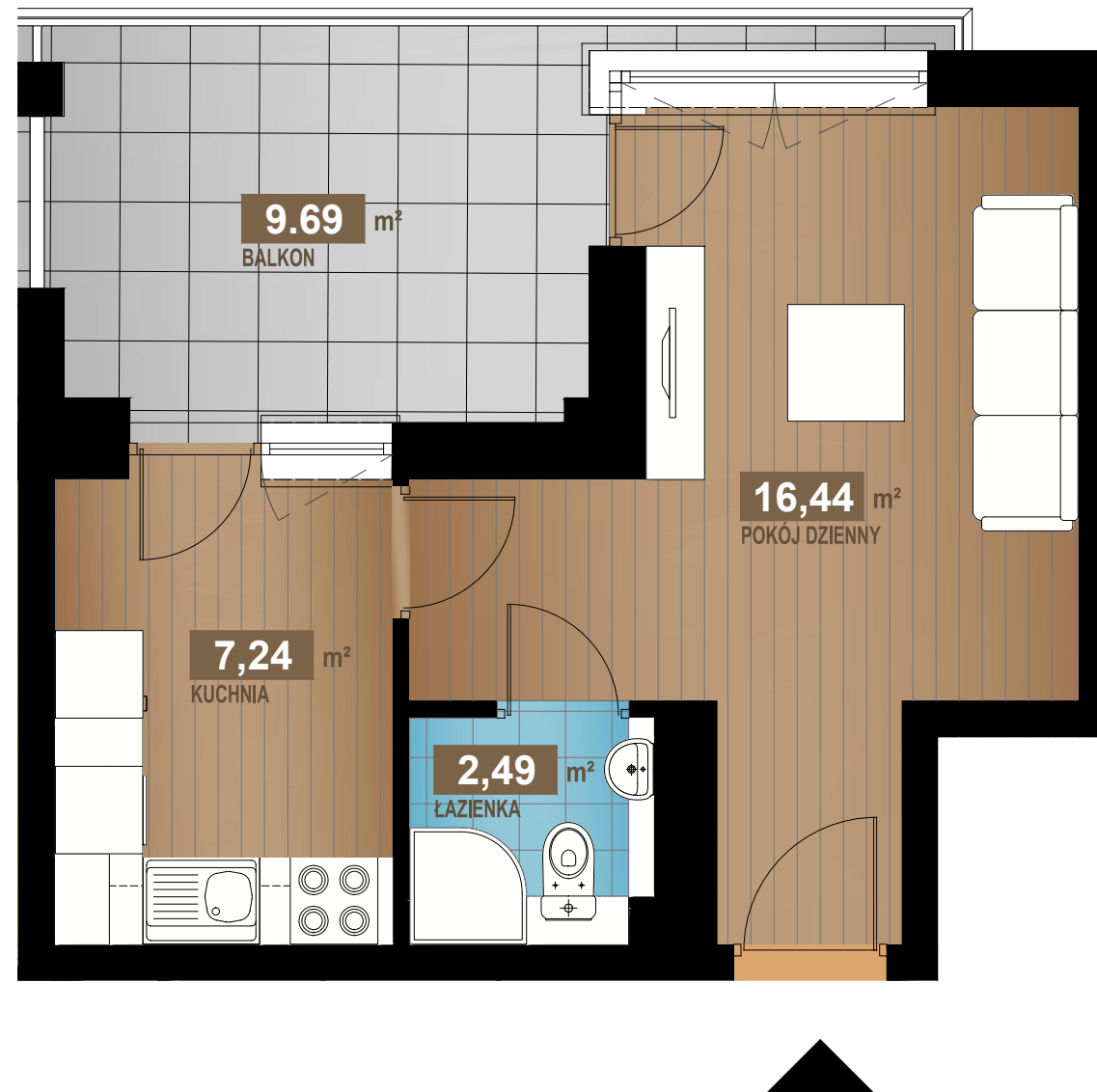
26,17 m<sup>2</sup>

1 pok.

POKÓJ DZIENNY	16,44m <sup>2</sup>
KUCHNIA	7,24m <sup>2</sup>
ŁAZIENKA	2,49m <sup>2</sup>

SUMA	26,17m <sup>2</sup>
------	---------------------

BALKON	9,69m <sup>2</sup>
--------	--------------------



[www.dobregopasterza52.pl](http://www.dobregopasterza52.pl)

S & W VISION  
BOGDAN SKOCZEK