

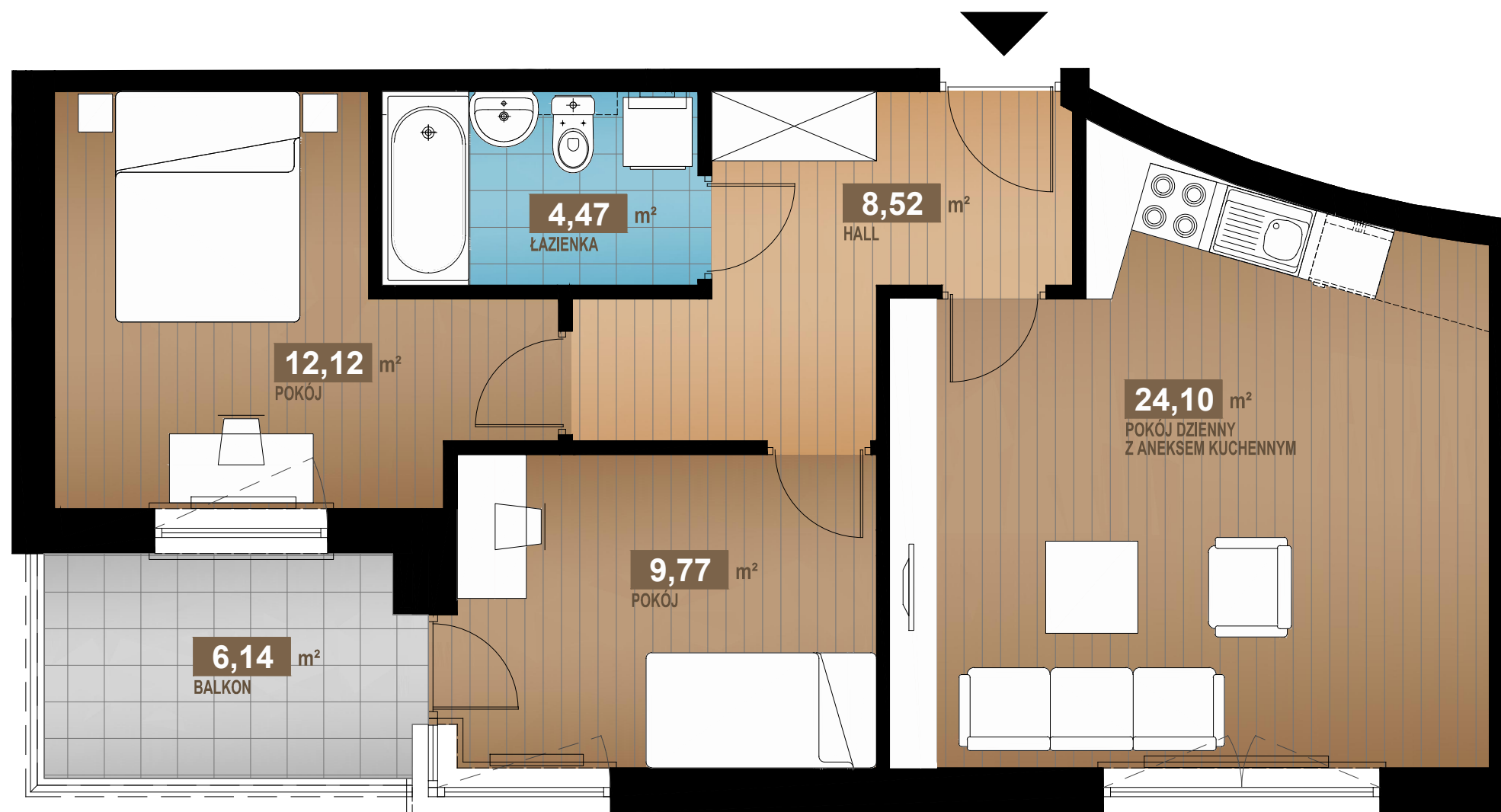
Dobrego Pasterza

—52—

III/M8 - 1 PIĘTRO

58,98 m²

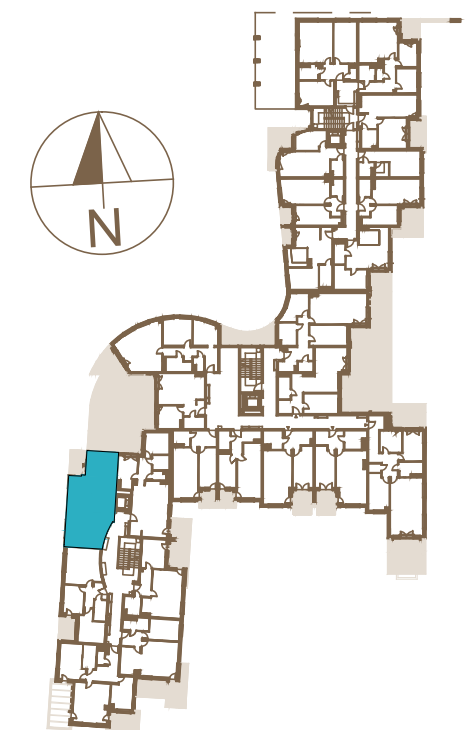
3 pok.



HALL	8,52m ²
POKÓJ DZIENNY Z ANEKSEM KUCHENNYM	24,10m ²
POKÓJ	9,77m ²
POKÓJ	12,12m ²
ŁAZIENKA	4,47m ²

SUMA 58,98m²

BALKON 6,14m²



www.dobregopasterza52.pl

S & W VISION
BOGDAN SKOCZEK

