

Dobrego Pasterza

—52—

I/M47 - 1 PIĘTRO

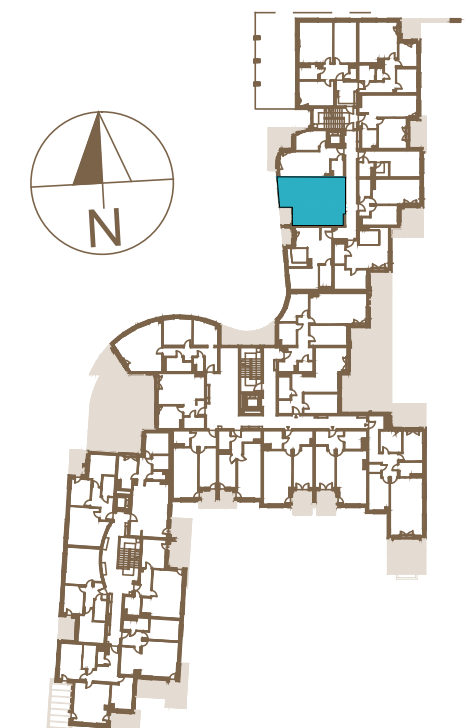
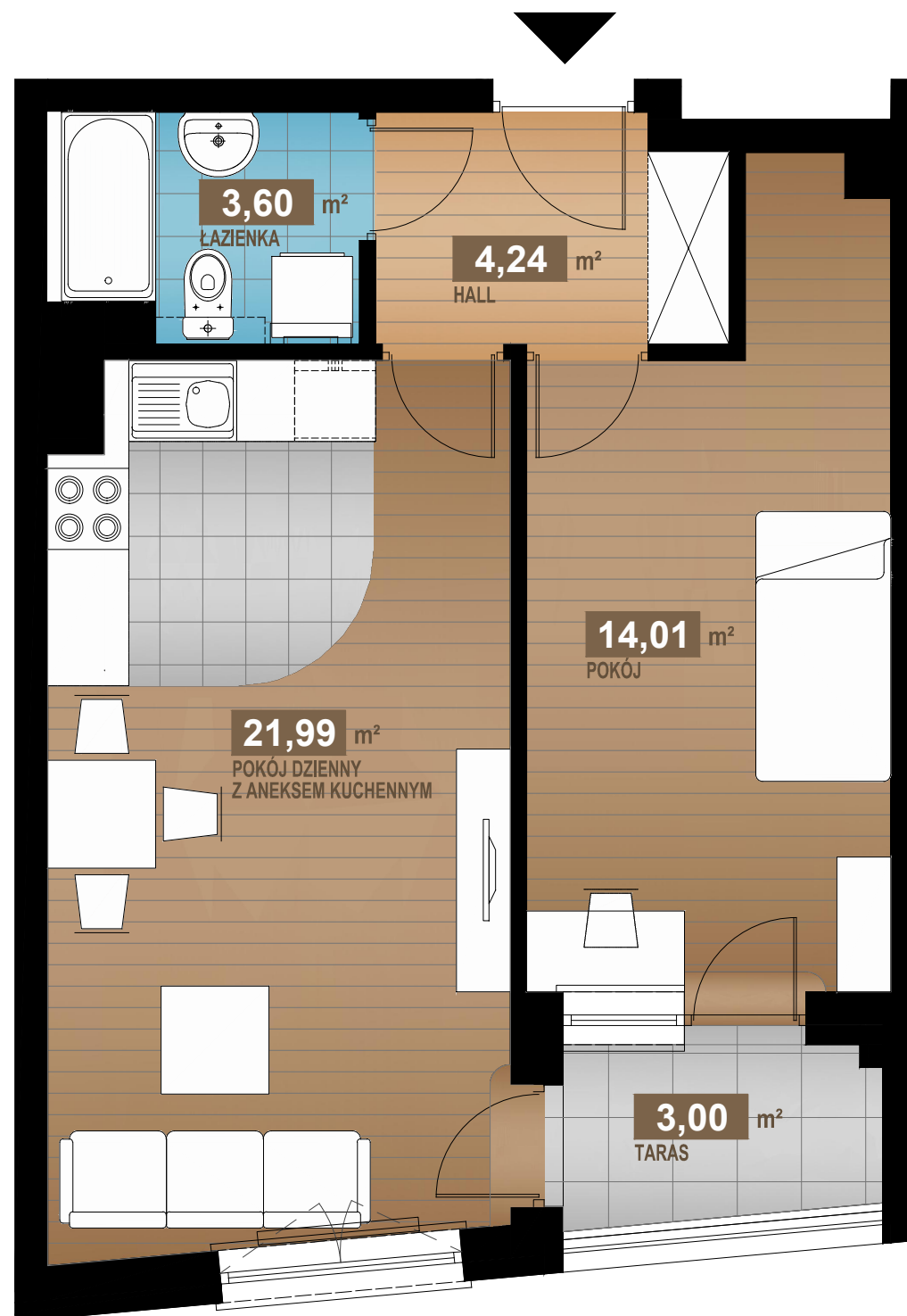
43,84 m²

2 pok.

HALL	4,24m ²
POKÓJ DZIENNY Z ANEKSEM KUCHENNYM	21,99m ²
POKÓJ	14,01m ²
ŁAZIENKA	3,60m ²

SUMA 43,84m²

TARAS 3,00m²



www.dobregopasterza52.pl

S & W VISION
BOGDAN SKOCZEK