

Dobrego Pasterza

—52—

I/M46 - 1 PIĘTRO

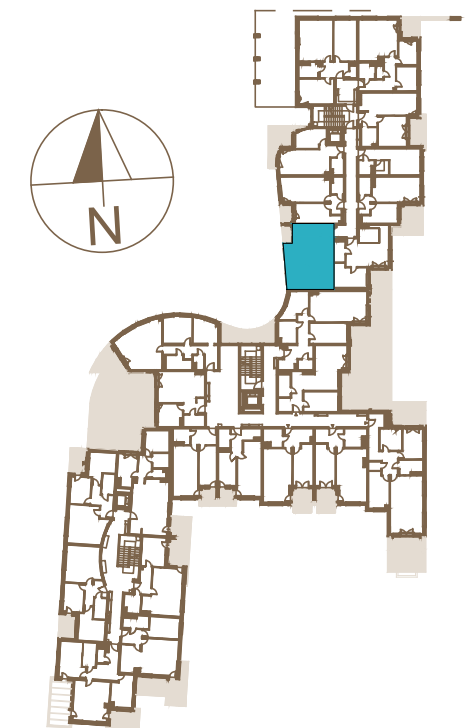
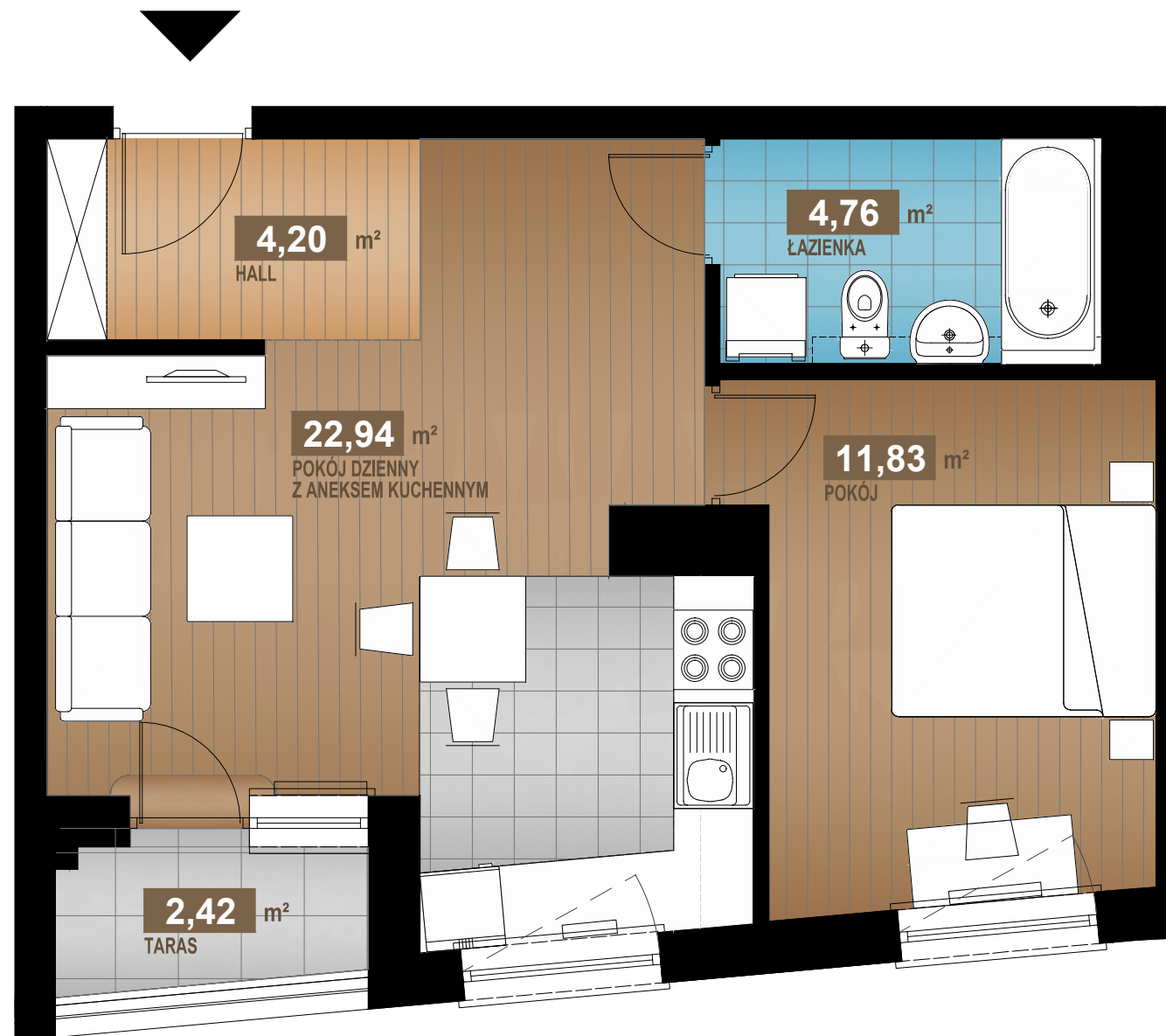
43,73 m²

2 pok.

HALL	4,20m ²
POKÓJ DZIENNY Z ANEKSEM KUCHENNYM	22,94m ²
POKÓJ	11,83m ²
ŁAZIENKA	4,76m ²

SUMA 43,73m²

TARAS 2,42m²



www.dobregopasterza52.pl

S & W VISION
BOGDAN SKOCZEK