

Dobrego Pasterza

—52—

I/M44 - 1 PIĘTRO

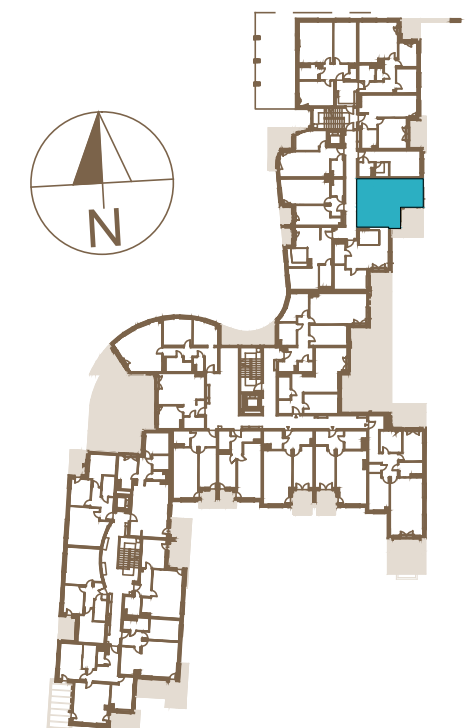
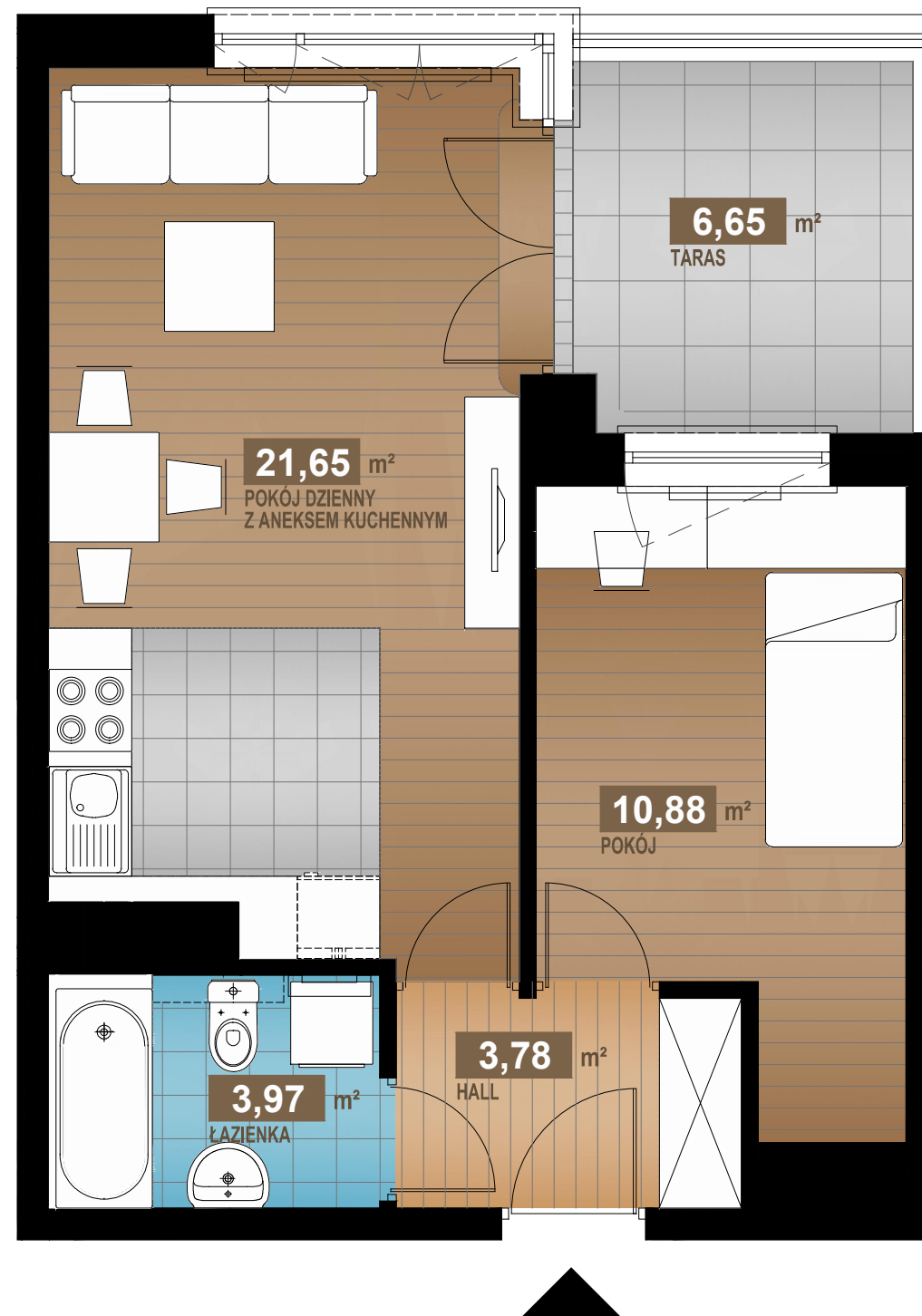
40,28 m²

2 pok.

HALL	3,78m ²
POKÓJ DZIENNY Z ANEKSEM KUCHENNYM	21,65m ²
POKÓJ	10,88m ²
ŁAZIENKA	3,97m ²

SUMA 40,28m²

TARAS 6,65m²



www.dobregopasterza52.pl

S & W VISION
BOGDAN SKOCZEK