

Dobrego Pasterza

—52—

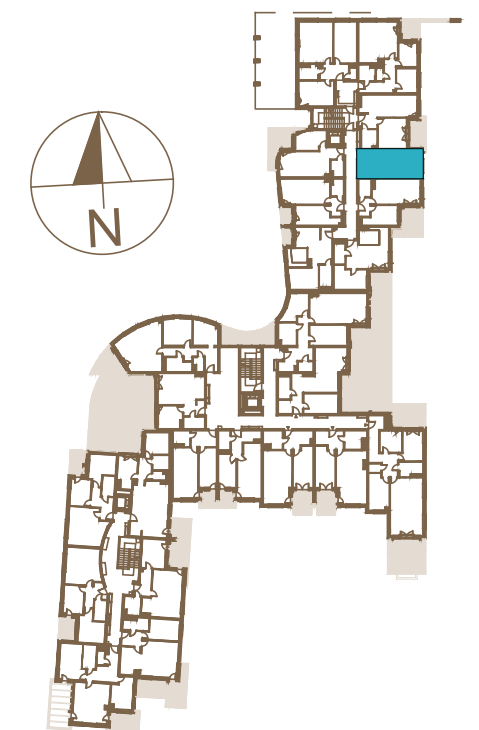
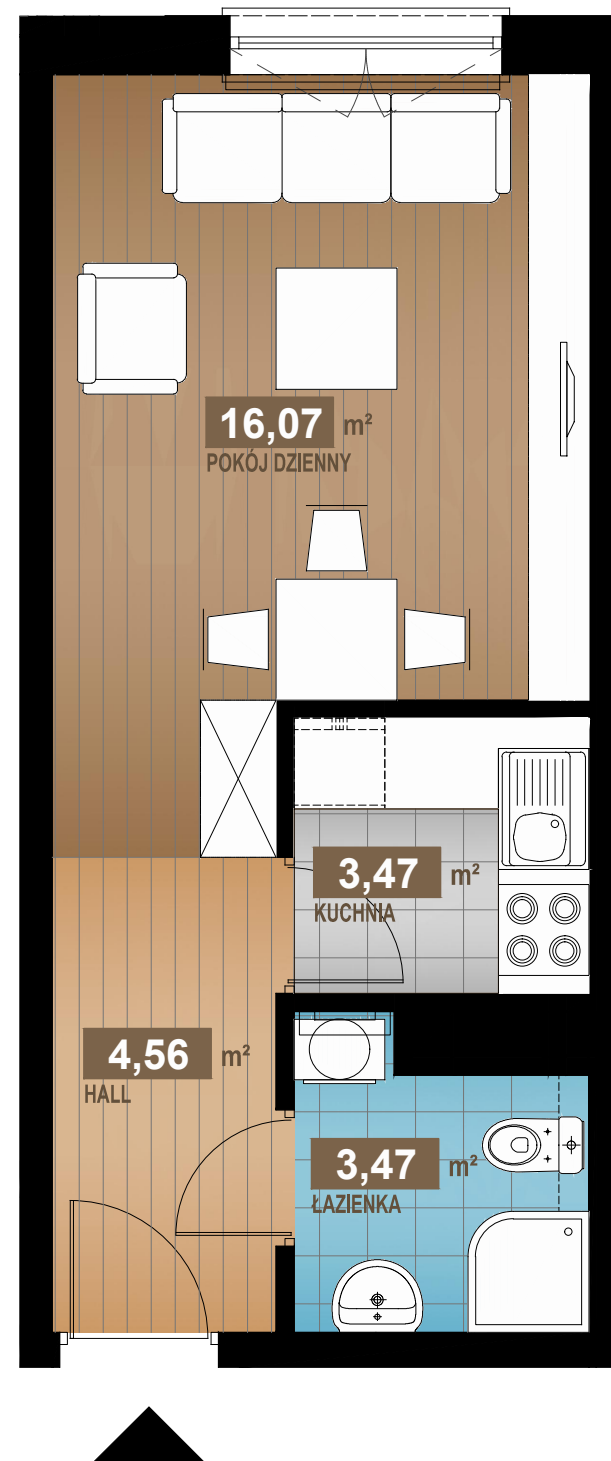
I/M43 - 1 PIĘTRO

27,57 m²

1 pok.

HALL	4,56m ²
POKÓJ DZIENNY	16,07m ²
KUCHNIA	3,47m ²
ŁAZIENKA	3,47m ²

SUMA 27,57m²



www.dobregopasterza52.pl

S & W VISION
BOGDAN SKOCZEK