

Dobrego Pasterza

—52—

I/M42 - 1 PIĘTRO

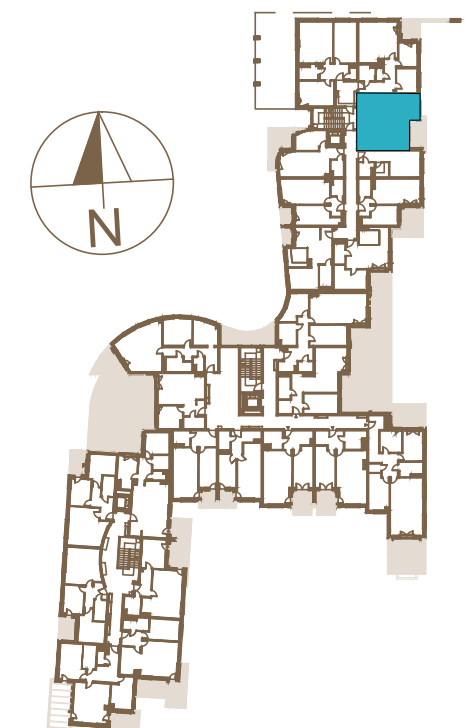
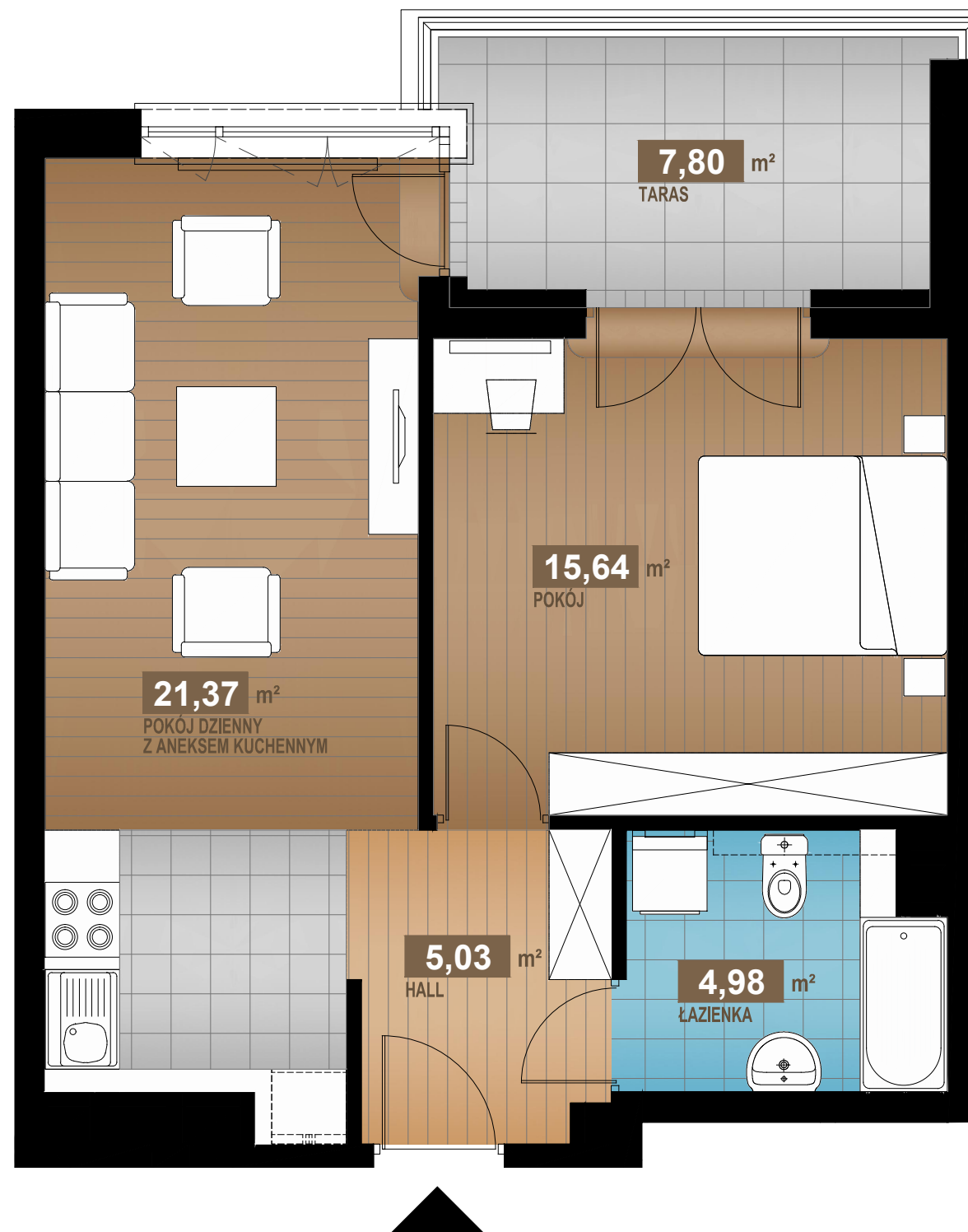
47,02 m²

2 pok.

HALL	5,03m ²
POKÓJ DZIENNY Z ANEKSEM KUCHENNYM	21,37m ²
POKÓJ	15,64m ²
ŁAZIENKA	4,98m ²

SUMA 47,02m²

TARAS 7,80m²



www.dobregopasterza52.pl

S & W VISION
BOGDAN SKOCZEK