

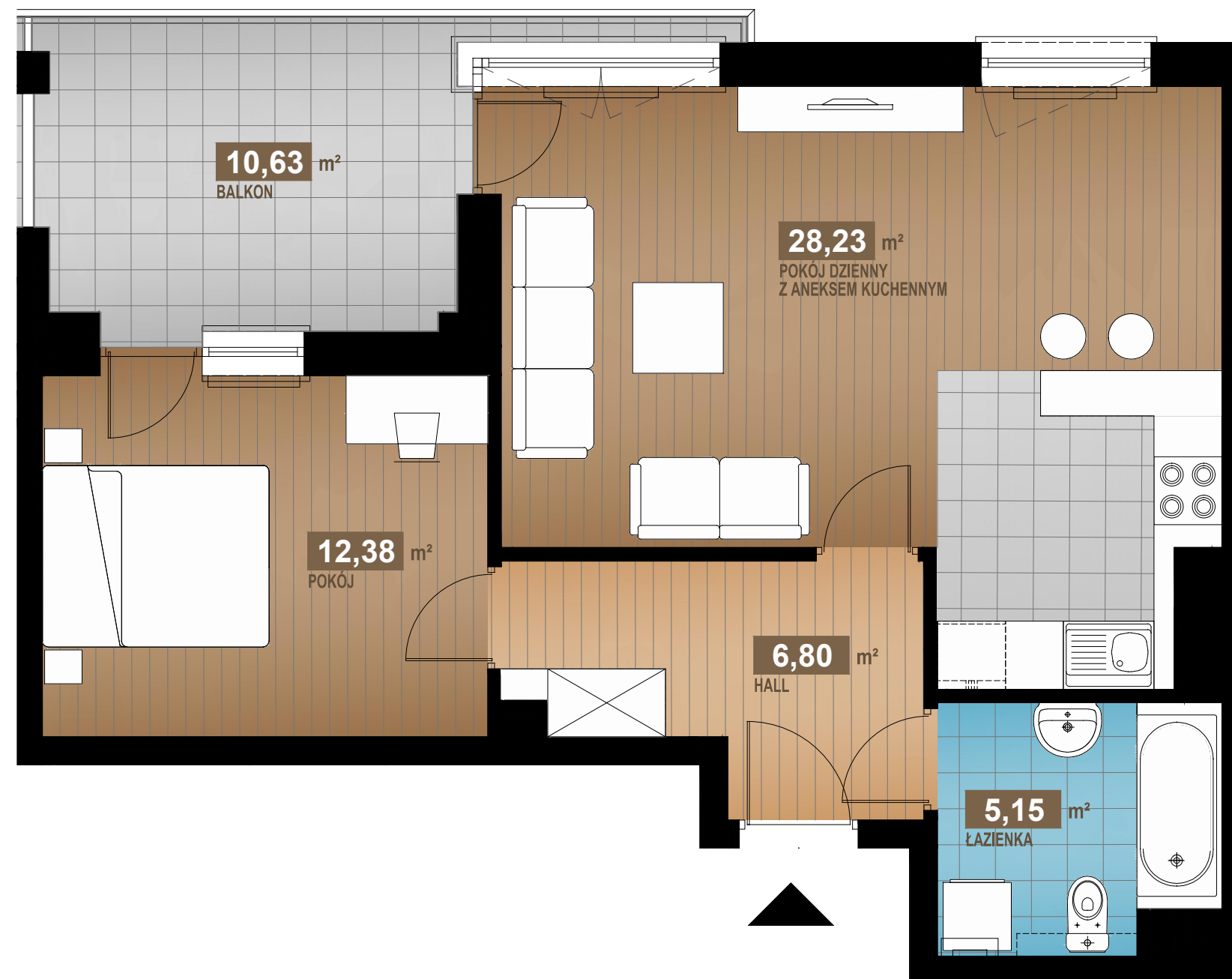
# Dobrego Pasterza

—52—

III/M4 - 1 PIĘTRO

52,56 m<sup>2</sup>

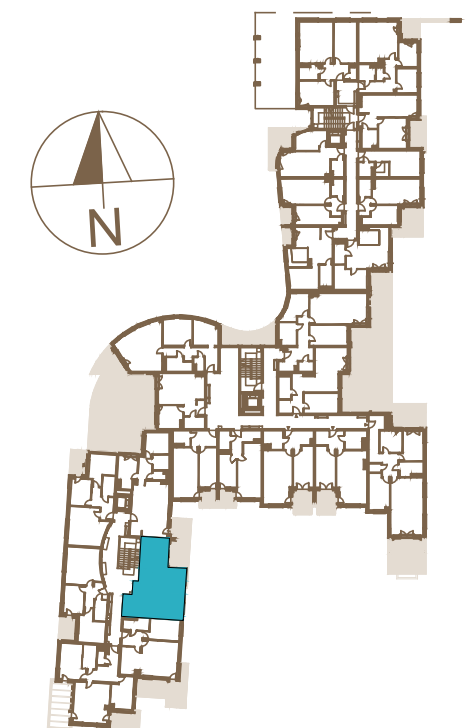
2 pok.



HALL	6,80m <sup>2</sup>
POKÓJ DZIENNY Z ANEKSEM KUCHENNYM	28,23m <sup>2</sup>
POKÓJ	12,38m <sup>2</sup>
ŁAZIENKA	5,15m <sup>2</sup>

SUMA 52,56m<sup>2</sup>

BALKON 10,63m<sup>2</sup>



[www.dobregopasterza52.pl](http://www.dobregopasterza52.pl)

S & W VISION  
BOGDAN SKOCZEK