

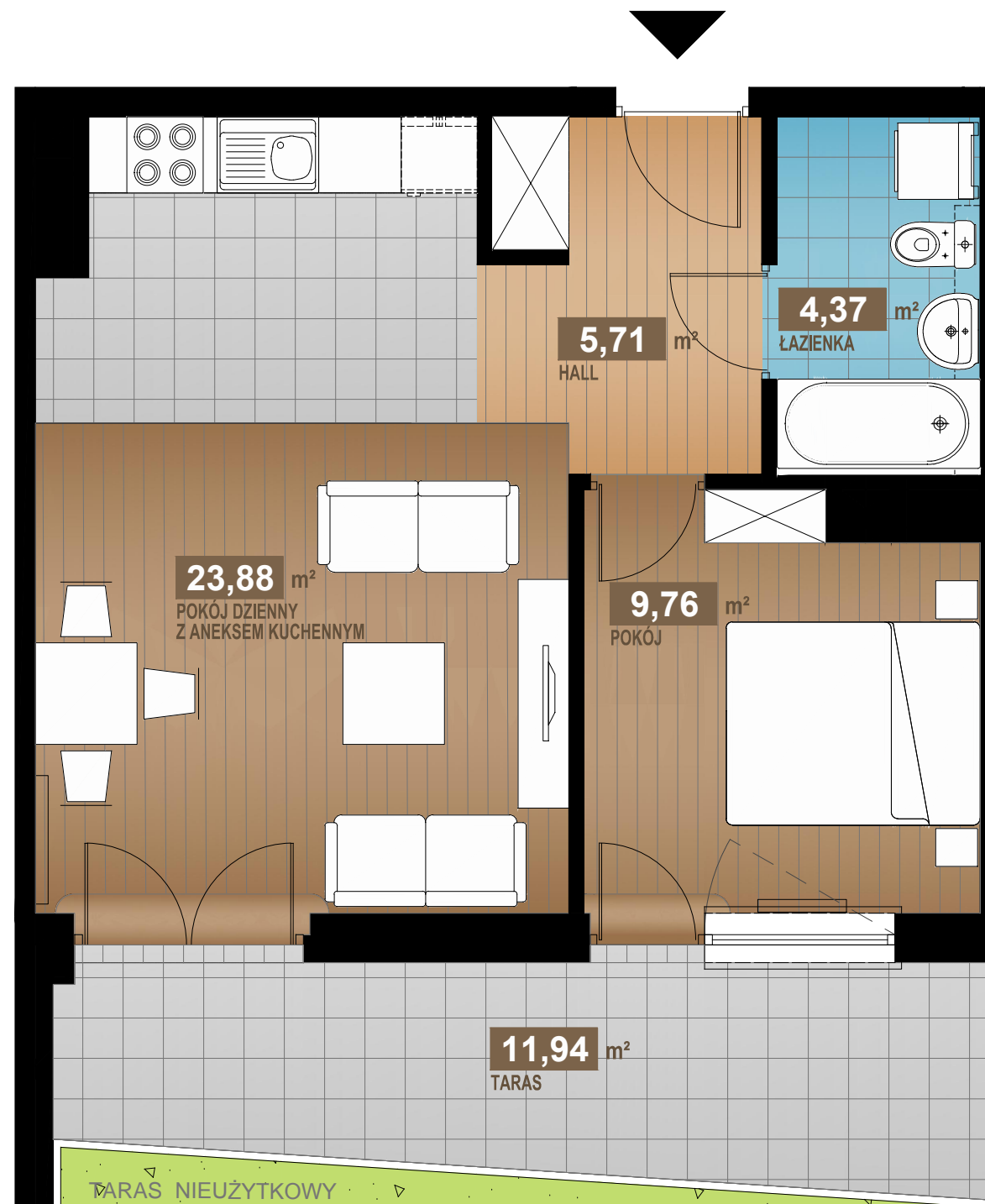
Dobrego Pasterza

—52—

II/M23 - 1 PIĘTRO

43,72 m²

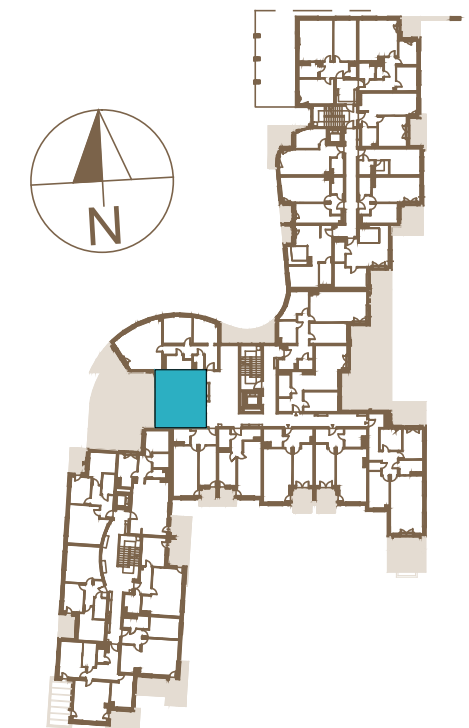
2 pok.



HALL	5,71m ²
POKÓJ DZIENNY Z ANEKSEM KUCHENNYM	23,88m ²
POKÓJ	9,76m ²
ŁAZIENKA	4,37m ²

SUMA 43,72m²

TARAS 11,94m²



www.dobregopasterza52.pl

S & W VISION
BOGDAN SKOCZEK

