

Dobrego Pasterza

—52—

II/M21 - 1 PIĘTRO

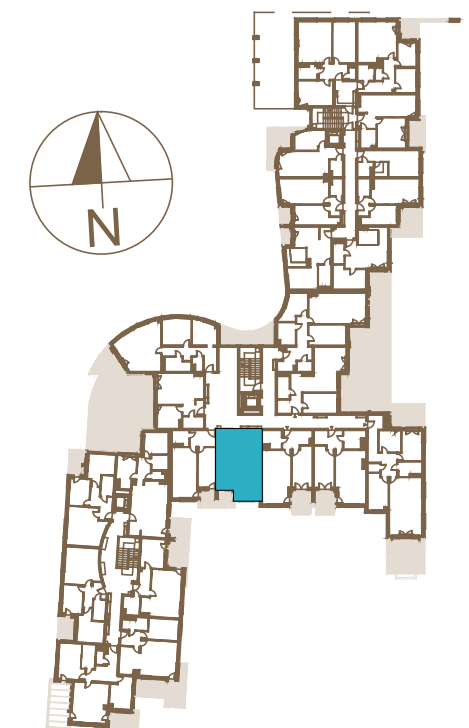
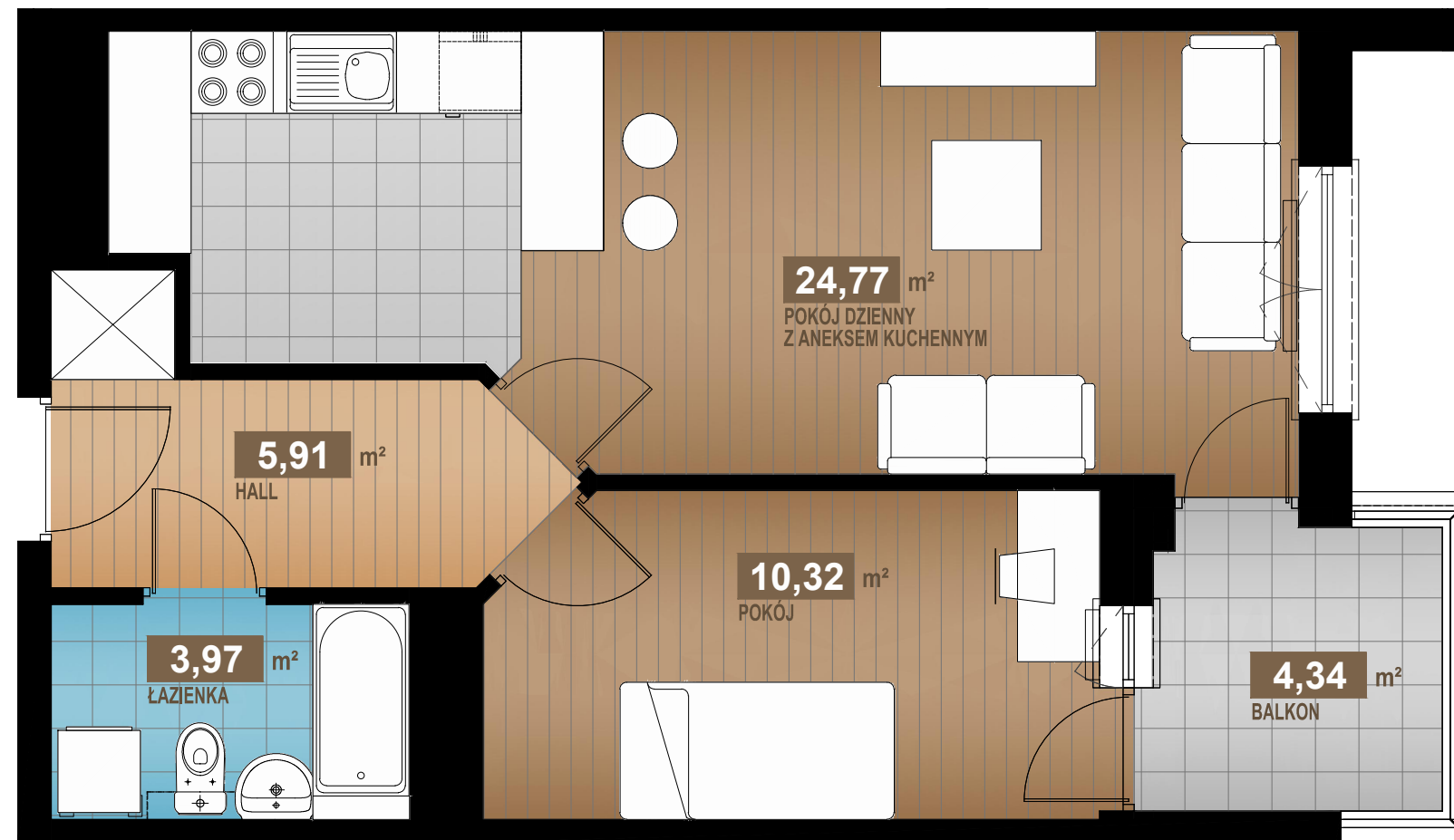
44,97 m²

2 pok.

HALL	5,91m ²
POKÓJ DZIENNY Z ANEKSEM KUCHENNYM	24,77m ²
POKÓJ ŁAZIENKA	10,32m ² 3,97m ²

SUMA 44,97m²

BALKON 4,34m²



www.dobregopasterza52.pl

S & W VISION
BOGDAN SKOCZEK

