

Dobrego Pasterza

—52—

II/M20 - 1 PIĘTRO

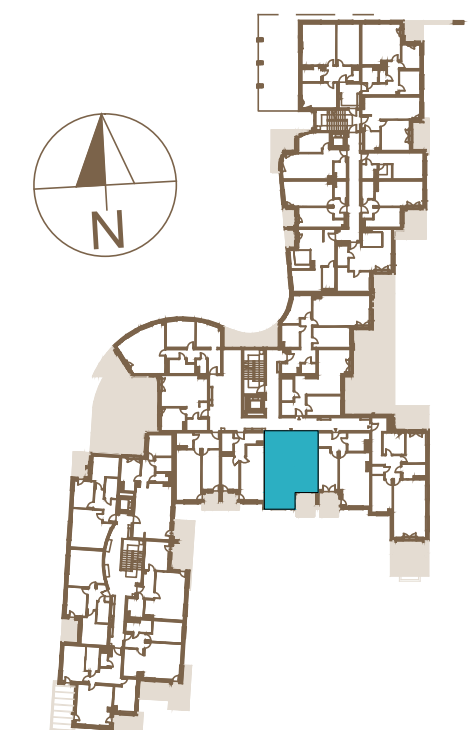
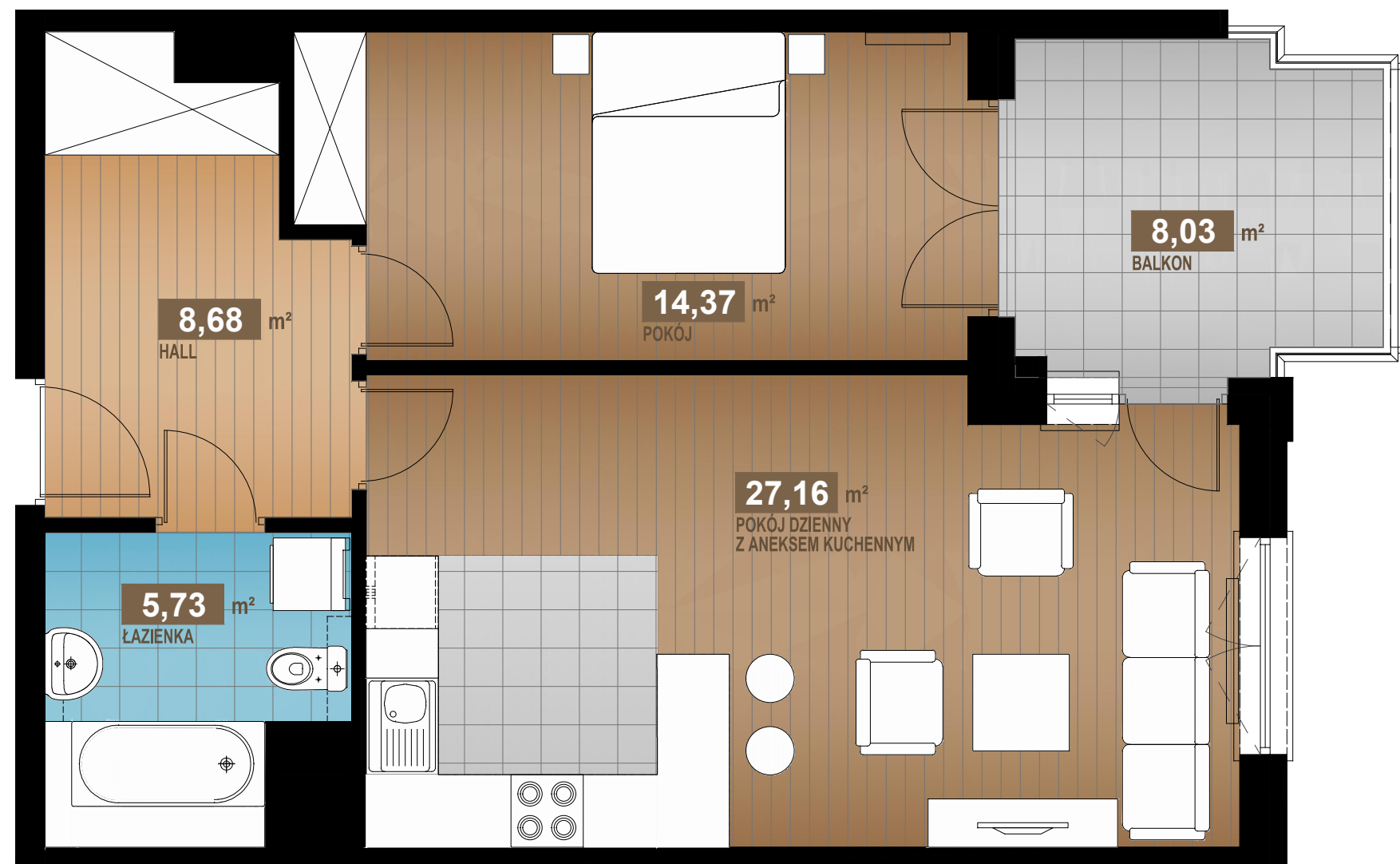
55,94 m²

2 pok.

HALL	8,68m ²
POKÓJ DZIENNY Z ANEKSEM KUCHENNYM	27,16m ²
POKÓJ	14,37m ²
ŁAZIENKA	5,73m ²

SUMA 55,94m²

BALKON 8,03m²



www.dobregopasterza52.pl

S & W VISION
BOGDAN SKOCZEK

